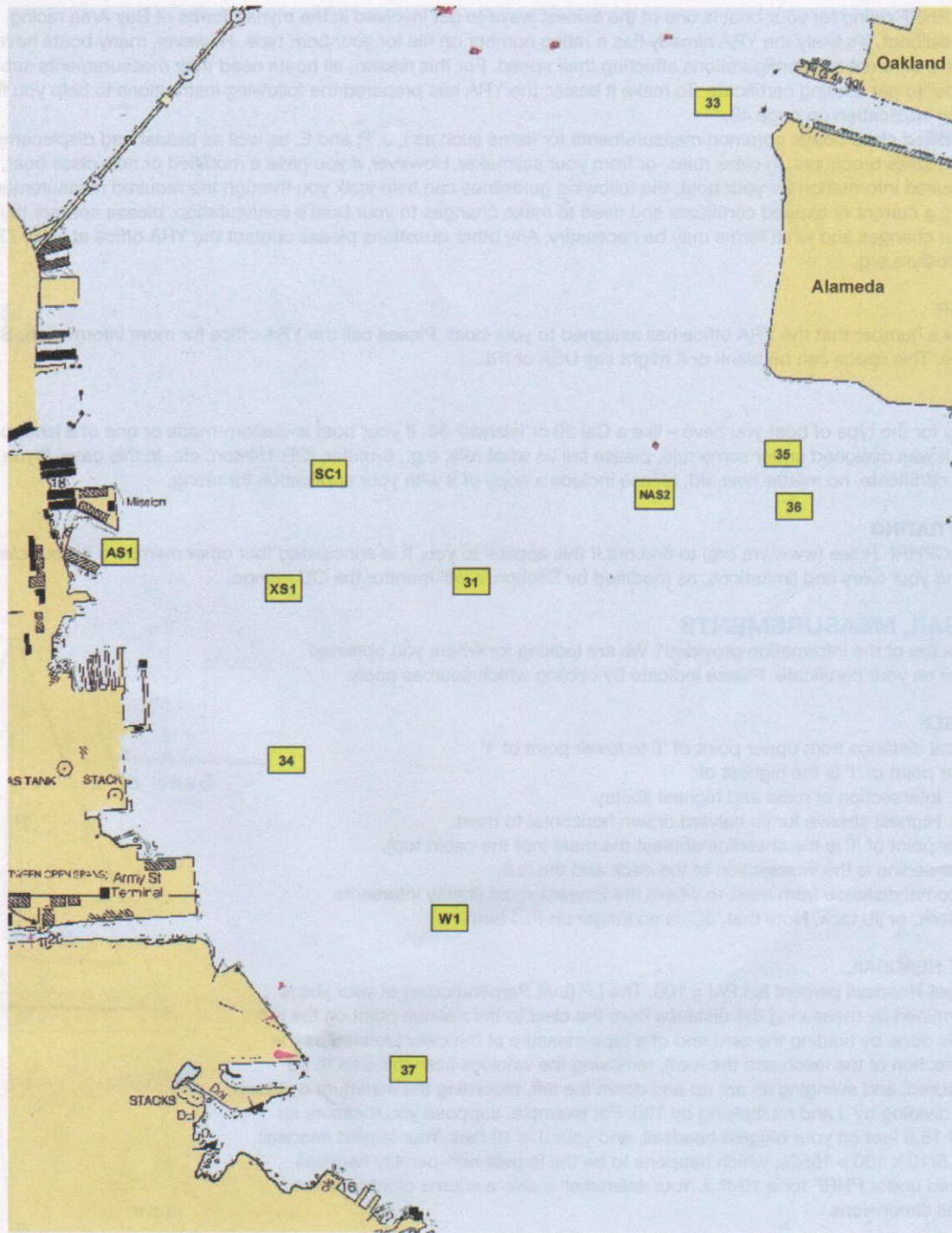


# SOUTH BAY MARKS



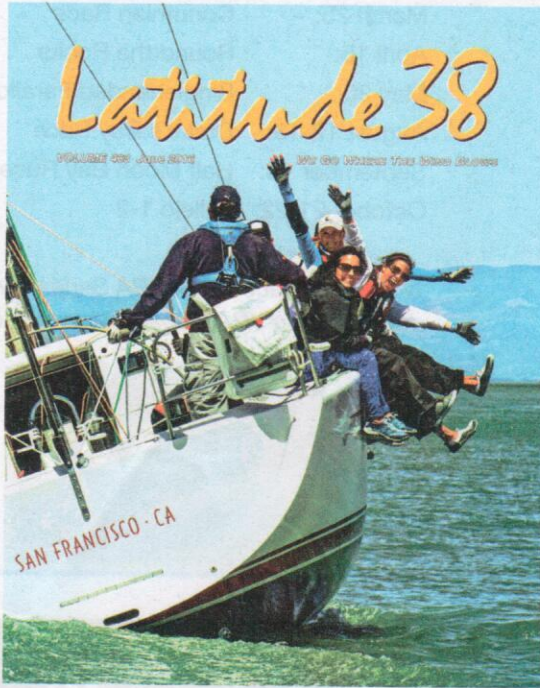
## DESCRIPTION OF MARKS

- |   |  |
|---|--|
| AS1: Yellow sphere approx. .25 nm east of BVBC                                  | 31: Temporary YC buoy approx. 1.2 nm SE of Mission Rock Terminal |
| NAS2: NAS Alameda Channel Mark "R2" FI R 4s                                     | 33: Red buoy "4" FI R 4s, Oakland Inner Harbor Entrance Channel  |
| SC1: Red & green buoy "SC" FI G (2+1) approx. 1 nm ENE of Mission Rock Terminal | 34: Red buoy "2" FI R 2s approx. .5 nm east of Potrero Point     |
| W1: Temporary YC buoy approx. 1 nm east of Army St. Terminal                    | 35: Green daymarker "3" FI G 2.5s, Alameda NAS Entrance Channel  |
| XS1: Temporary YC buoy approx. halfway between 31 & AS1                         | 36: Red daymarker "4" FI R 4s, Alameda NAS Entrance Channel      |
|   | 37: Green buoy "5" FI G 4s approx. 1 nm SSE of Army St. Terminal |



# SEND YOUR BEST SHOT!

## 2017 Cover Contest... All Year Long

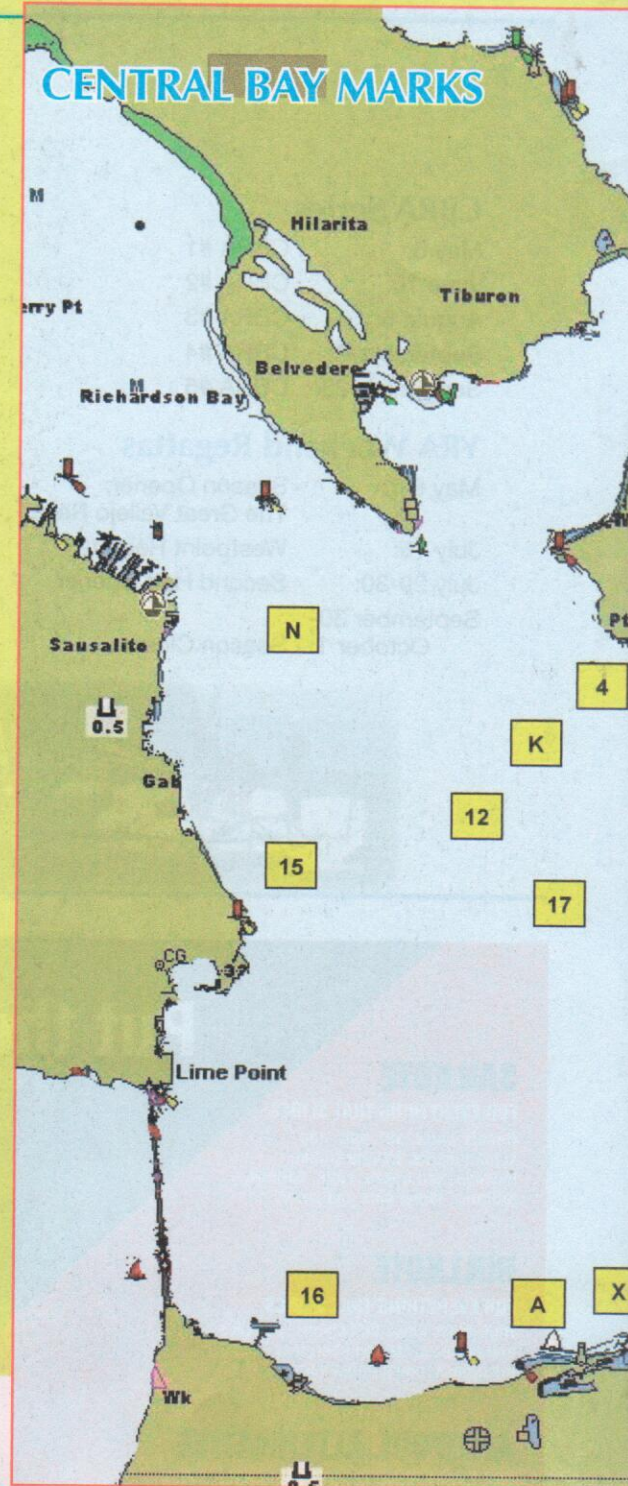


Win a Prize • Tell Your Story

Send your best race, crew,  
or boat photo to:  
[general@latitude38.com](mailto:general@latitude38.com)

**Frequent Winners – Grand Prize 2018 Cover!**

### CENTRAL BAY MARKS



### DESCRIPTION OF MARKS

Buoys of Berkeley Circle: BOC, COC, EOC, FOC, GOC, XOC

YRA Mark XOC has been designated the *Bob Klein Memorial Buoy* by the YRA Board of Directors. Maintenance of this buoy is funded by the Richmond Yacht Club Foundation.

A: Yellow sphere "A" Outer Buoy ~ St. Francis Yacht Club

D: G "3" Fl G 4s 15 ft on Olympic Circle

K: Temporary YC buoy .3 nm west of YRA 4 and in line with YRA 12

L: Temporary YC buoy .31 nm west of windmill in line with YRA 4

N: Daymark "2" Fl R on channel east of Sausalito

X: Yellow sphere "X" ~ Golden Gate Yacht Club

1: Red Rock Island

2: Alcatraz Island

3: Farallones Light (ocean)

4: Temporary YC buoy WSW of Pt. Knox

5: Temporary YC buoy approx. .6 nm SW of Alcatraz

6: Yellow Column "M" 200 yds. north of Ft. Mason Docks

7: R "2" Fl 6s 1 nm NW of Treasure Island

8: R "4" Fl 4s Horn 1 nm east of Pt. Blunt

9: Temp. YC buoy .5 nm ESE of west end of Berkeley Pier ruins 1 nm ENE of YRA 10

10: Temporary YC buoy approx. .6 nm ESE of west end of Berkeley Pier ruins

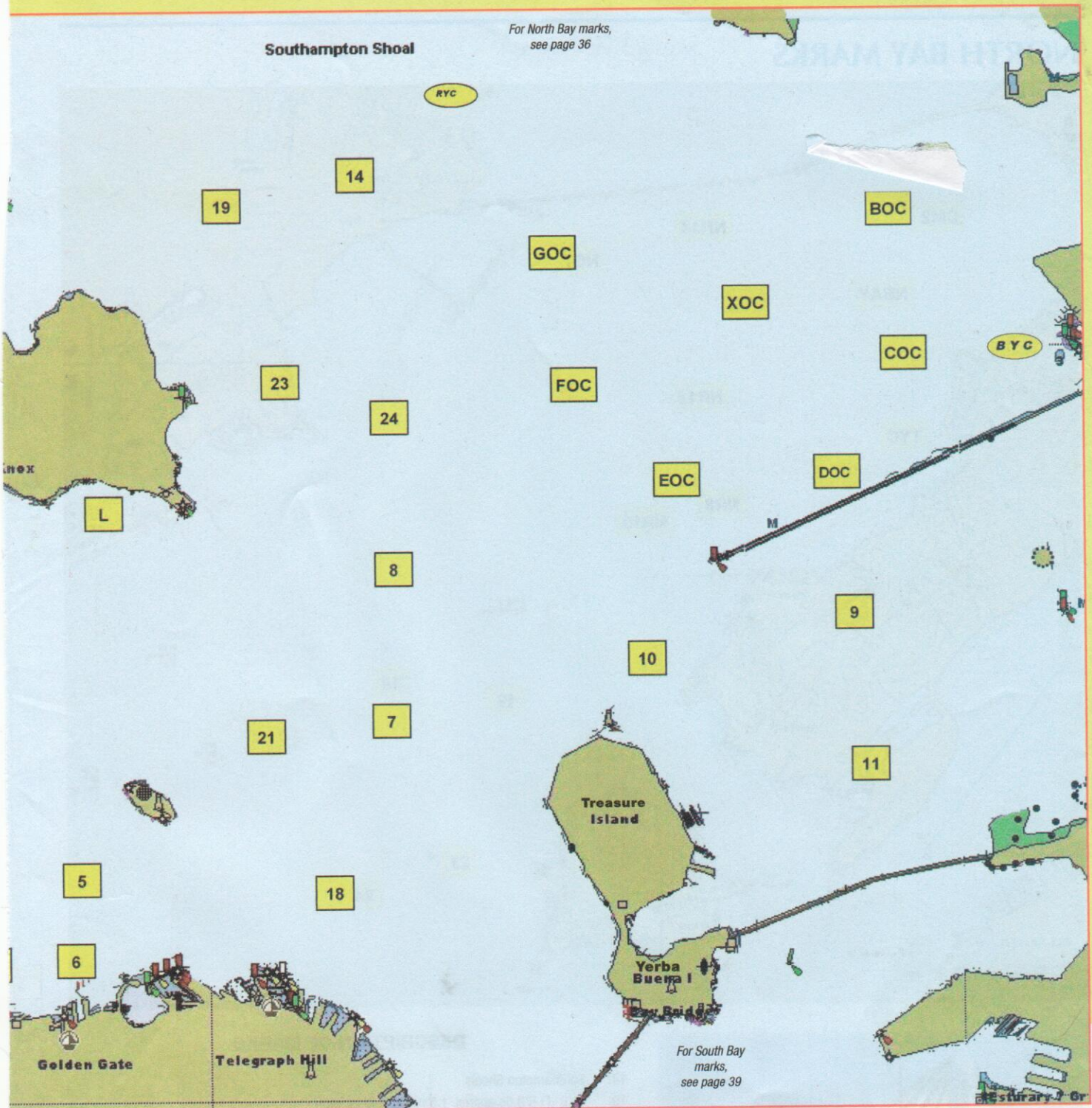
11: Temporary YC buoy 1.5 nm east of Treasure Island

12: G "1" Fl G 4s Little Harding Rock

13: Crissy Field Buoy

14: Southampton Shoals



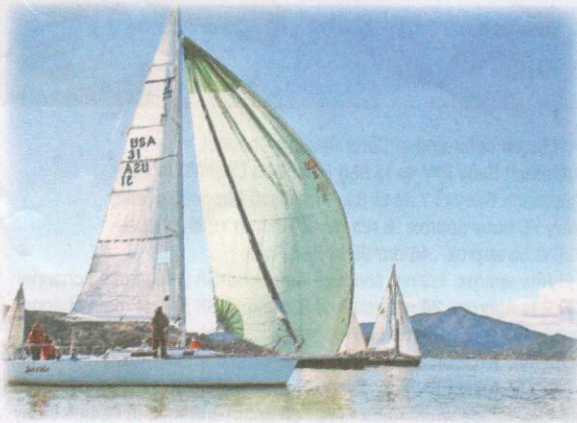
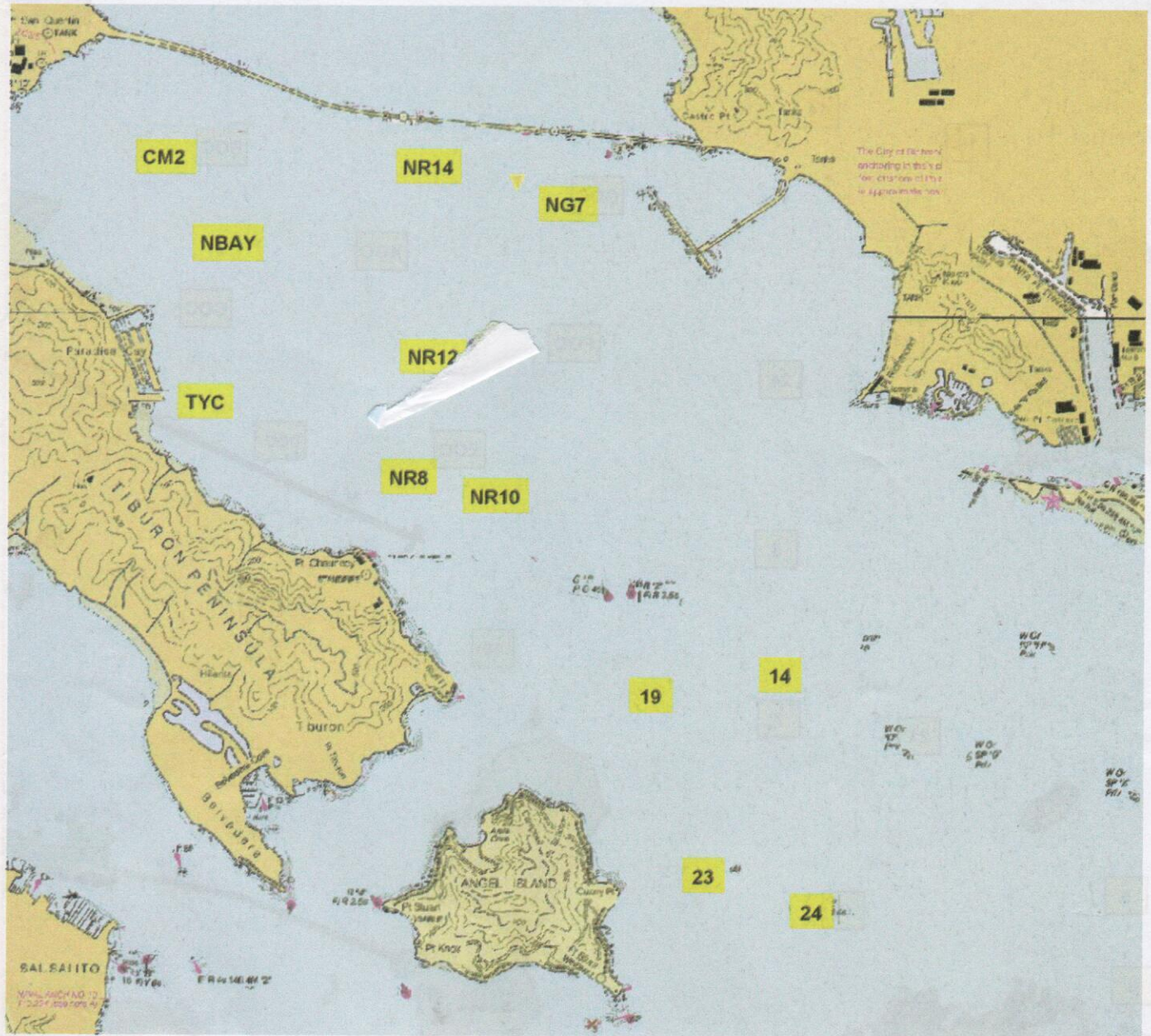


- 15: Temporary YC buoy approx. .5 nm east of Yellow Bluff (Sausalito vicinity)
- 16: Yellow Column "C" .2 nm east of Fort Point "Blackaller"  
YRA Mark 16 has been designated the *Thomas D. Blackaller Jr. Memorial Buoy* by the YRA Board of Directors. The maintenance of this buoy will be funded by the Thomas D. Blackaller Jr. Fund.
- 17: RG "HR" FI (2+1) R 6s, Harding Rock
- 18: RG "BR" FI (2+1) G 6s bell, Blossom Rock
- 19: R "8" FI R 2.5s approx. 1.5 nm east of Pt. Bluff
- 21: G "1" FI G 6s .65 nm NE of Alcatraz
- 23: RW "A" Mo (A) east of Angel Island
- 24: R "6" FI R 4s bell, 1.1 nm east of Quarry Pt.
- BYC: Yellow column "BYC" east of COC

- CM2: R "2" FI R 6s on outer end of Corte Madera Channel
- NO: North Approach Buoy FI Y 4s to San Francisco Channel (ocean)
- SO: South Approach Buoy FI Y 4s to San Francisco Channel (ocean)
- NBAY: Temporary YC buoy approx. .6 nm NE of Tiburon YC clubhouse
- NG7: G "7" FI G 2.5s approx. .45 nm SE of Red Rock
- NR12: R "12" FI R4s approx. 1.3 nm south of Richmond-SR Bridge main channel
- NR14: R "14" FI R4s approx. .28 nm south of Richmond-SR Bridge main channel
- PB: Point Bonita RG FI (2+1) R 6s bell (ocean)
- RYC: Yellow column "RYC" on southern edge of Southampton Shoals
- SF: Center Channel Buoy RW "SF", strobe FI 2.5s whistle on SF Channel (ocean)
- TYC: Privately-maintained white mark "TYC" off south entrance to Paradise Cay



# NORTH BAY MARKS



CAROLE GUNN

## DESCRIPTION OF MARKS

- 14: Southampton Shoals
- 19: R "8" FI R 2.5s approx. 1.5 nm east of Pt. Bluff
- 23: RW "A" Mo (A) east of Angel Island
- 24: R "6" FI R 4s Bell, 1.1 nm east of Quarry Pt.
- CM2: R "2" FI R 6s on outer end of Corte Madera Channel
- NO: North Approach Buoy FI Y 4s to San Francisco Channel (ocean)
- SO: South Approach Buoy FI Y 4s to San Francisco Channel (ocean)
- NBAY: Temp YC buoy approx. .6 nm NE of Tiburon YC clubhouse
- NG7: G "7" FI G 2.5s approx. .45 nm SE of Red Rock
- NR12: R "12" FI R 4s approx. 1.3 nm south of Richmond-San Rafael Bridge main channel
- NR14: R "14" FI R 4s approx. .28 nm south of Richmond-San Rafael Bridge main channel
- SF: Center Channel Buoy RW "SF", strobe FI 2.5s whistle, on San Francisco Channel (ocean)
- TYC: Privately maintained white mark "TYC" off south entrance to Paradise Cay